

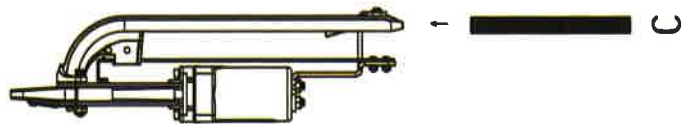
# PNEUMATIC C-RING TOOL

## AC01M / AC02M / AC03M / AC04M / AC05M

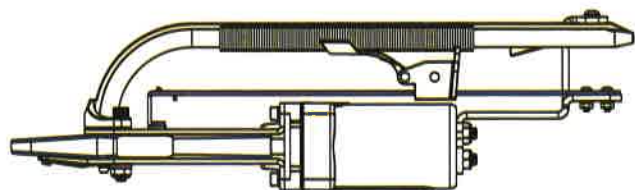


### OPERATING INSTRUCTION

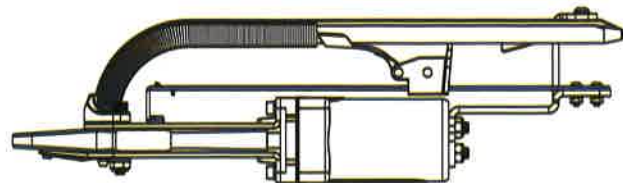
STEP 1.  
Load C-Ring on the magazine and push  
C-Ring till angle of magazine.



STEP 2.  
Push back pusher spring to end position of  
magazine.

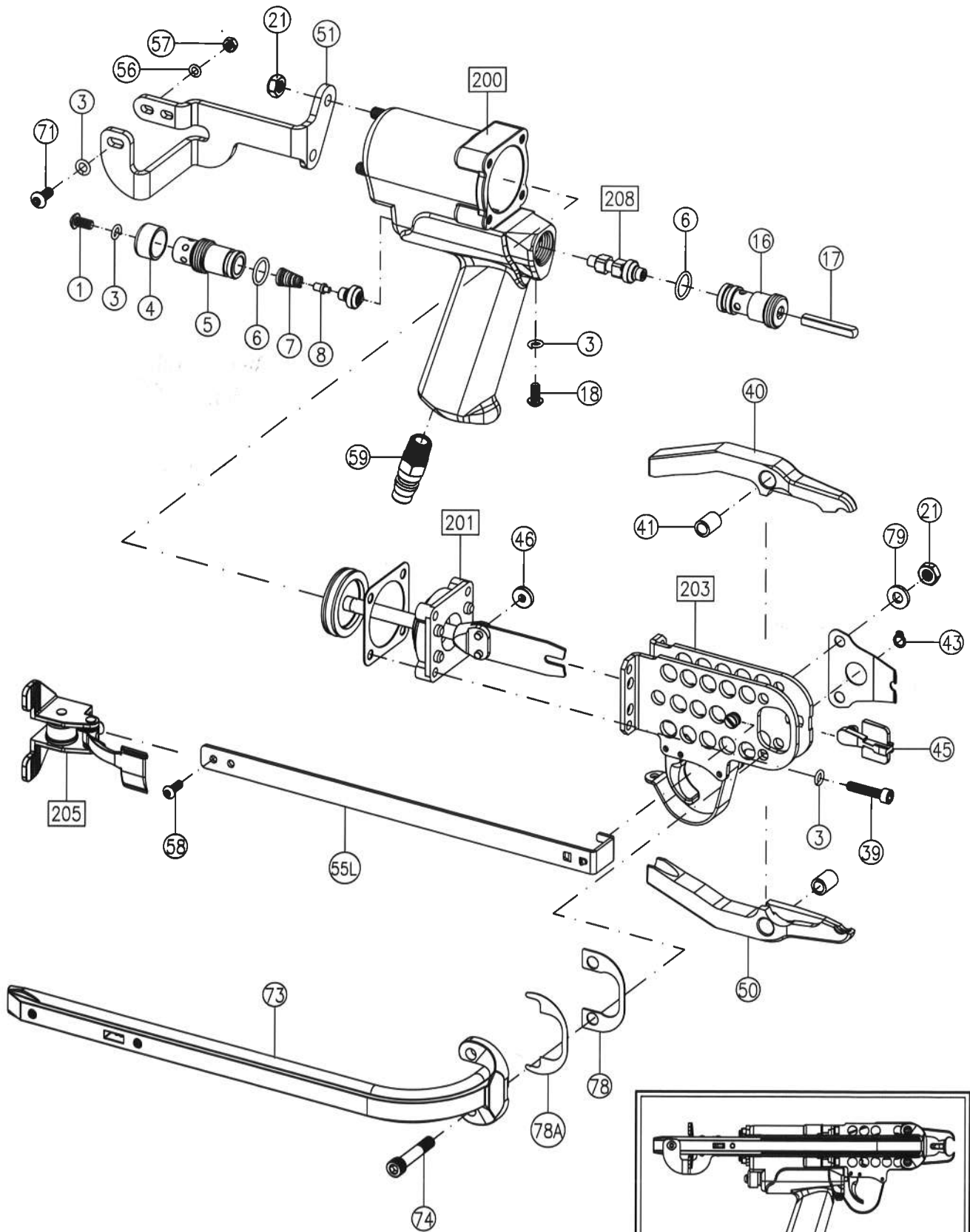


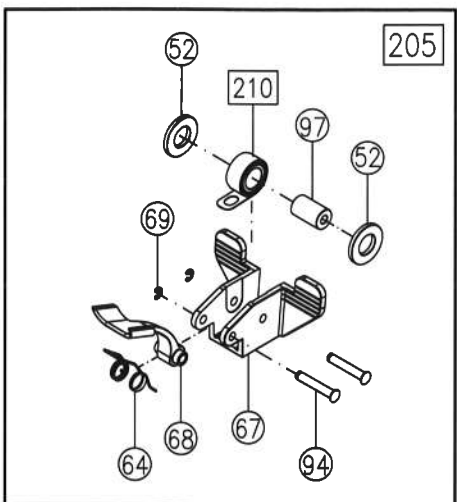
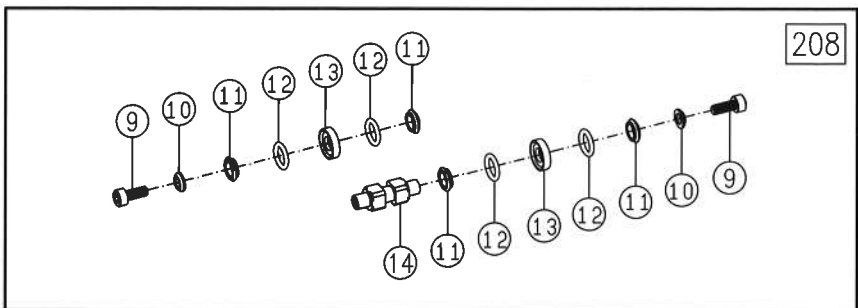
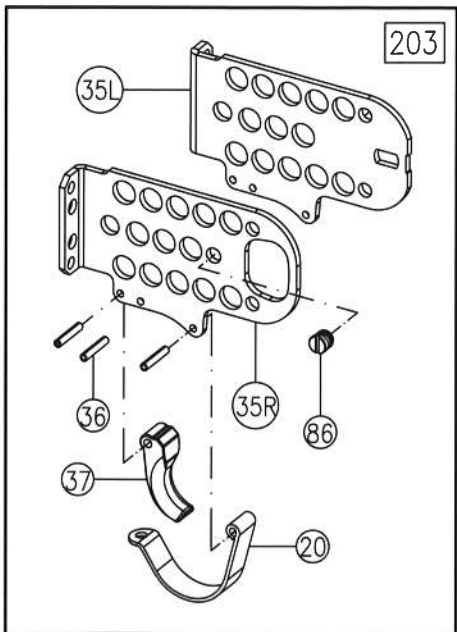
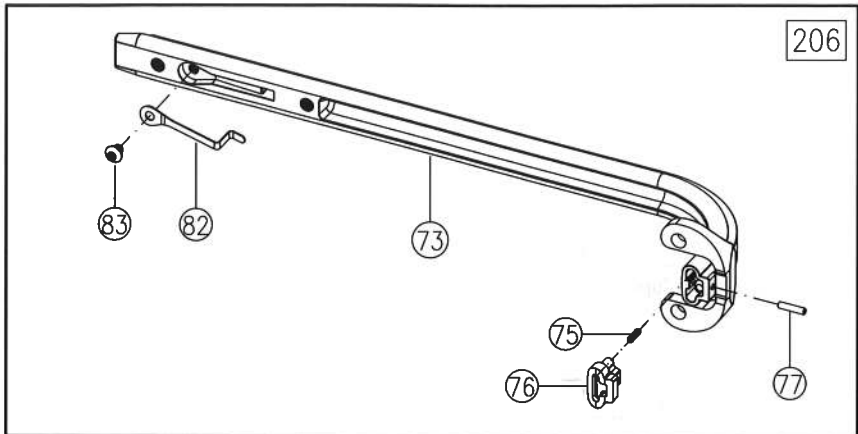
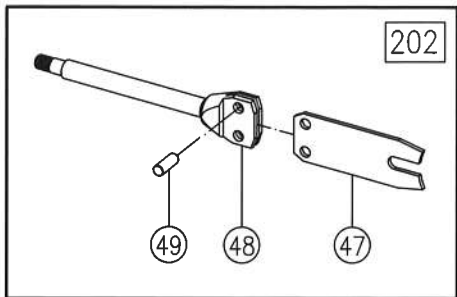
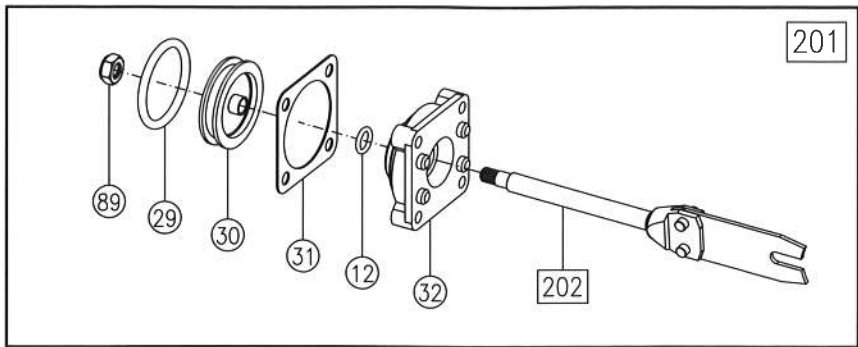
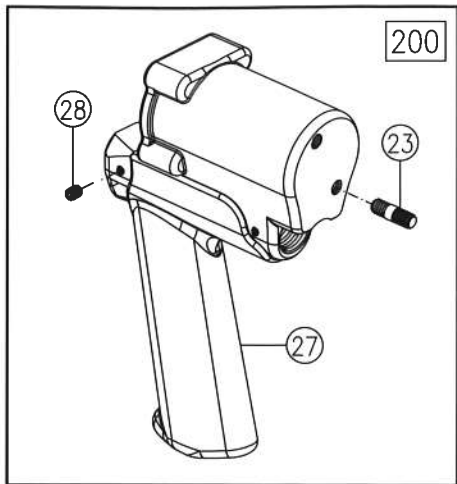
STEP 3.  
Hold pusher and engage pusher with C-Ring  
and push pusher forward. Completed loading  
C-Ring on the magazine.



**Note: New design of pusher (with two ears), easier loading C-Ring.  
This tool is compliant with or conforms to EN 792-13**

# AC01M / 02M / 03M / 04M / 05M





ITEM	DESCRIPTION	TOOL MODEL	PART NUMBER	Q'TY
200	Housing Assy.		AC01200	1
201	Assy.	01M	AC01201	1
		02M	AC02201	
		03M/04M	AC03201	
		05M	AC05201	
202	Piston Rod Assy.	01M	AC01202	1
		02M	AC02202	
		03M/04M	AC03202	
		05M	AC05202	
203	Frame Assy.		AC01203	1
205	Pusher Assembly	01M	AC01M205	1
		02M-05M	AC02M205	
206	Magazine Assembly	01M	AC01M206	1
		02M-05M	AC02M206	
208	Throttle Assembly		AC01208	1
210	Spring Assy.		AC01M210	1

# PARTS LIST

ITEM	DESCRIPTION	TOOL MODEL	PART NUMBER	Q'TY	ITEM	DESCRIPTION	TOOL MODEL	PART NUMBER	Q'TY
1	Set Screw		AC01001	1	47	Feeder Blade	01M	AC01047	1
3	Shakeproof lock Washer		AC01003	7			02M	AC02047	
4	Air Deflector		AC01004	1			03M/04M	AC03047	
5	Rear Valve Seat		AC01005	1			05M	AC05047	
6	O-Ring		AC01006	2	48	Piston Rod	01M	AC01048	1
7	Throttle Spring		AC01007	1			02M	AC02048	
8	Throttle Spring Locator		AC01008	1			03M-05M	AC03048	
9	Throttle Valve Screw		AC01009	2	49	Roller Pin		AC01049	2
10	Valve Screw Washer		AC01010	2	50	Lower Jaw	01M	AC01050	1
11	O-Ring Support		AC01011	4			02M	AC02050	
12	O-Ring		AC01012	5			03M	AC03050	
13	O-Ring Center Support		AC01013	2			04M	AC04050	
14	Throttle Valve Spacer		AC01014	1			05M	AC05050	
16	Front Valve Seat		AC01016	1	51	Feeder Arm		AC01M051	1
17	Throttle Stem		AC01017	1	52	Plastic Washer		AC01M052	2
18	Button Head Cap Screw		AC01018	1	55L	Feeder Guide Rail		AC01M55L	1
20	Trigger Guard		AC01020	1	56	Washer		AC01056	2
21	Flexloc Nut		AC01021	4	57	Nut		AC01057	2
23	Stud		AC01023	2	58	Screw		AC01M058	2
27	Housing		AC01027	1	59	Inlet Bushing		AC01059	1
28	Set Screw		AC01028	2	64	Pusher Spring		AC01M064	1
29	O-Ring		AC01029	1	67	Magazine Set		AC01M067	1
30	Piston		AC01030	1	68	Pusher	01M	AC01M068	1
31	Cylinder Gasket		AC01031	1			02M-05M	AC02M068	
32	Piston Stop Spacer	01M/03M/04M	AC01032	1	69	Stop Ring		AC01M069	2
		02M/05M	AC02032		71	Feeder Arm Screw		AC01071	1
35R	Side Plate (Right)		AC0135R	1	73	Magazine Body	01M	AC01M073	1
35L	Side Plate (Left)		AC0135L	1			02M-05M	AC02M073	
36	Roll Pin		AC01036	3	74	Jaw Bolt		AC01074	2
37	Trigger		AC01037	1	75	Magazine Spring	01M	AC01M075	2
39	Socket Head Cap Screw		AC01039	4			02M-05M	AC02M075	
40	Upper Jaw	01M	AC01040	1	76	Magazine Shoe	01M	AC01M076	1
		02M	AC02040				02M-05M	AC02M076	
		03M	AC03040		77	Roll Pin	01M	AC01077	1
		04M	AC04040				02M-05M	AC02077	
		05M	AC05040				78A	Magazine Shim	
41	Jaw Bushing		AC01041	2	78	Magazine Shim(Thick)		AC01078	1
43	Latch Pin Clip		AC01043	1	79	Washer		AC01079	2
44	Latch Spring	01M-04M	AC01044	1	82	Clip Anti-Backup		AC02082	1
		05M	AC05044		83	Screw		AC01M083	1
45	Latch	01M/02M	AC01045	1	86	Plate Screw		AC01M086	1
		03M/04M	AC03045		89	Flexloc Nut		AC01089	1
		05M	AC05045		94	Pusher Pin		AC01M094	2
46	Roller	01M/03M-05M	AC01046	4	97	Spring Roll		AC01M097	1
		02M	AC02046						

## THE WAYS OF ELIMINATING SIMPLE BREAKDOWN

### ◆ AIR LEAK

#### A. Motionless position and the front leak

1. The part No.16 Front Valve Seat is not locked deep enough.
2. The part No.59 inlet is not closed enough but it would not affect any operation.

#### B. Motion position and the front leak

1. Part No.5 Rear Valve Seat is locked too deep.
2. The inlet No.59 is not closed enough but it would not affect any working.

### ◆ No working or stick of the trigger

1. The parts No.5 and No.16 are locked too deep to make assembly No.208 immovable.
2. Lacking for maintenance and getting rusty on assembly No.208 which is immovable.
3. The part No.29 O-Ring is worn and torn or part No.30 is loosened.
4. The part No.17 Throttle Stem could not bounce out which may be stuck by part No.16 with consolidation glue.

### ◆ The C-Rings may spurt out during operation.

1. Jaws of the tool are too tight. The part No.41 Jaw Bushing is worn and torn.
2. The jaws of tool are not smooth and hit on a C-Ring.
3. The C-Rings are with bad quality or not suitable on the tool.

### ◆ The ring is not made a good shape from the machine.

1. The jaws are broken.
2. The assembly #201 is broken or worn.
3. The staple is not good enough or not fit on the machine.

## RECOMMENDED SPARE PARTS LIST

ITEM	DESCRIPTION	PART NUMBER	Q'TY
29	O-Ring	AC01029	1
30	Piston	AC01030	1
40	Upper Jaw	AC0_040	1
44	Latch Spring	AC0_044	1
45	Latch	AC0_045	1
47	Feeder Blade	AC0_047	1
50	Lower Jaw	AC0_050	1
64	Pusher Spring	AC01M064	1
210	Spring Assy.	AC01M210	1