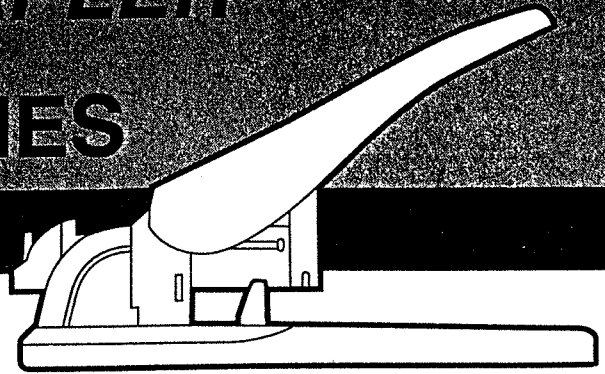


# HEAVY DUTY STAPLER HD-12N SERIES

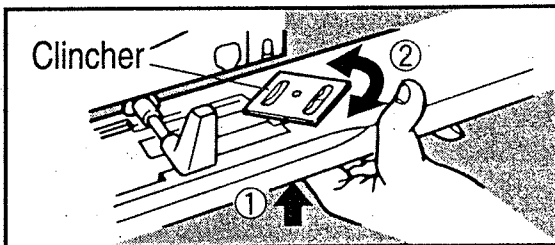
## INSTRUCTION MANUAL



### STAPLES USED, STAPLING CAPACITY AND CORRESPONDING STAPLER

STAPLES USED	LEG LENGTH	STAPLING CAPACITY 55kg (16-lb) BOND PAPER	CORRESPONDING STAPLER			
			HD-12N/13	HD-12N/17	HD-12N/24	HD-12L/17
1210FA-H(23/10)	10mm(3/8")	30~70sheets				
1213FA-H(23/13)	13mm(1/2")	50~110sheets				
1215FA-H(23/15)	15mm(9/16")	90~140sheets				
1217FA-H(23/17)	17mm(5/8")	110~170sheets				
1220FA-H(23/20)	20mm(3/4")	150~200sheets				
1224FA-H(23/24)	24mm(15/16")	200~240sheets				

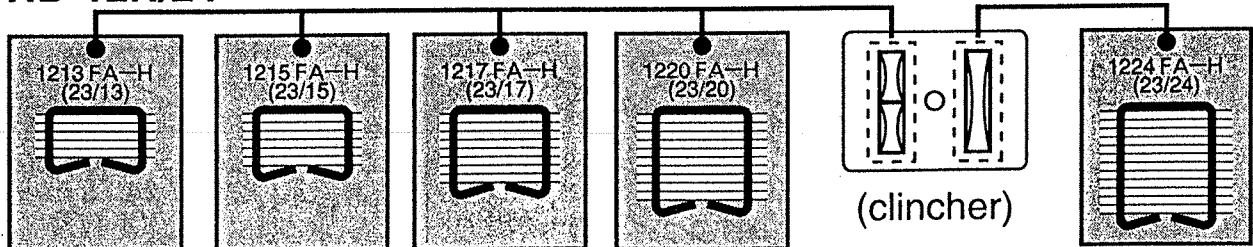
### HOW TO ADJUST CLINCHER FOR STAPLES ON HD-12N/24



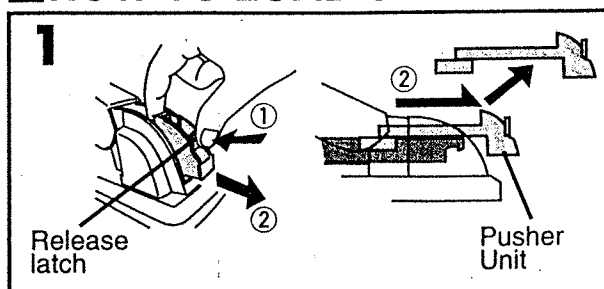
When using 24mm (15/16") leg length staples (MAX 1224FA-H).

- ① Push the clincher from behind the base.
  - ② Turn it to place Anvil A for clinch.
- For other leg lengths of staples, use Anvil B.

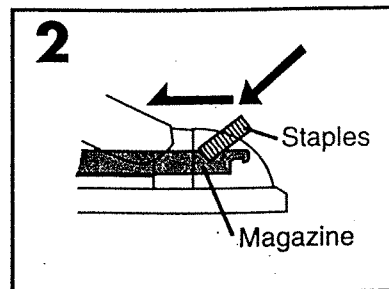
### HD-12N/24



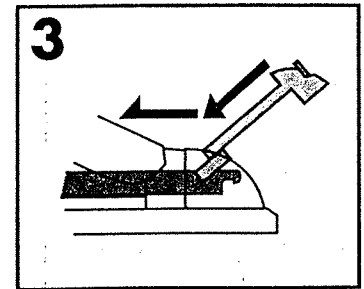
### HOW TO LOAD STAPLES



- ① Press release latch forward.
- ② Pull pusher unit to the rear.



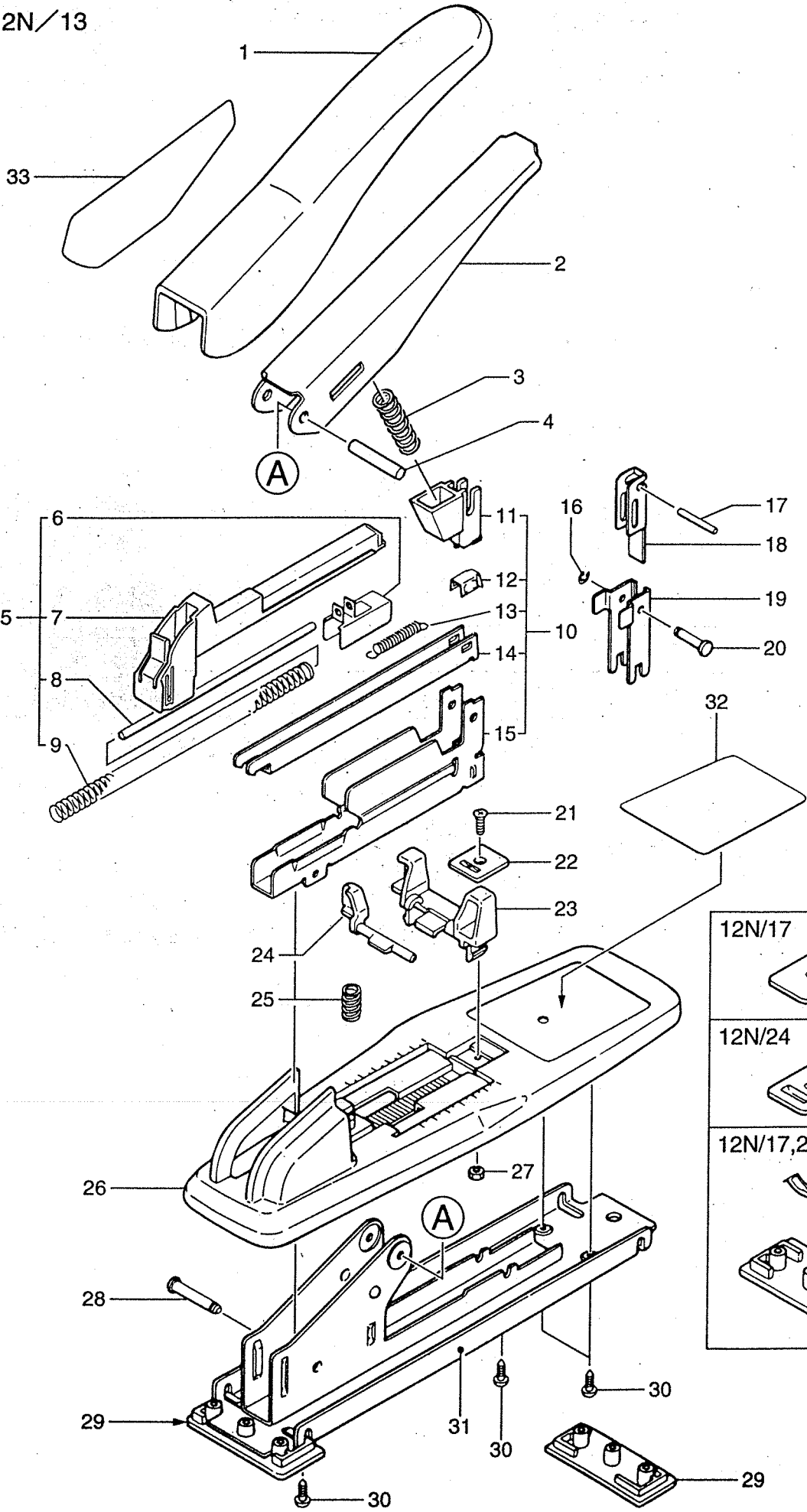
- ② Load staples in magazine.



- ③ Push the pusher unit back in until it clicks.

# HD-12N/13,17,24

HD-12N/13



12N/17		22
12N/24		22
12N/17,24		27
		29

Index No.	Model No.	HD-12N/13		HD-12N/17		HD-12N/24	
		Code No.	Description	Code No.	Description	Code No.	Description
1		HD14005	Handle cover	HD14024	Handle cover	HD14024	Handle cover
2		HD14010	Handle unit	HD14022	Handle unit	HD14022	Handle unit
3		KK23687	Com.spring 3687	KK23688	Com.spring 3688	KK23689	Com.spring 3689
4		FF31132	Pin 1132	FF31132	Pin 1132	FF31132	Pin 1132
5		HD80015	Pusher assy.	HD80015	Pusher assy.	HD80018	Pusher assy.
6		HD14000	Pusher	HD14000	Pusher	HD14036	Pusher
7		HD13999	Staple cover	HD13999	Staple cover	HD13999	Staple cover
8		HD14001	Spring guide	HD14001	Spring guide	HD14001	Spring guide
9		KK23686	Com.spring 3686	KK23686	Com.spring 3686	KK23686	Com.spring 3686
10		HD80015	Magazine assy.	HD80017	Magazine assy.	HD80019	Magazine assy.
11		HD13998	Driver guide	HD13998	Driver guide	HD13998	Driver guide
12		HD12238	Staple supporter	HD12303	Staple supporter	HD14034	Staple supporter
13		KK13275	Spring 3275	KK13151	Spring 3151	KK13152	Spring 3152
14		HD13997	Staple guide	HD14016	Staple guide	HD14033	Staple guide
15		HD13996	Magazine	HD14015	Magazine	HD14032	Magazine
16		HD13996	E ring 2.3	HD13996	E ring 2.3	HD13996	E ring 2.3
17		FF31132	Pin 1132	FF31132	Pin 1132	FF31132	Pin 1132
18		HD12240	Driver unit	HD12305	Driver unit	HD12355	Driver unit
19		HD12239	Magazine cover	HD12304	Magazine cover	HD14035	Magazine cover
20		FF41292	Step pin 1292	FF41294	Step pin 1294	FF41294	Step pin 1294
21		AA22101	Plus screw 3X10	—	—	—	—
22		HD12256	Clincher	HD14020	Clincher unit	HD14020	Clincher unit
23		HD14007	Guage	HD14007	Guage	HD14007	Guage
24		HD14008	Lock lever	HD14008	Lock lever	HD14008	Lock lever
25		KK23236	Spring 3236	KK23241	Spring 3241	KK23241	Spring 3241
26		HD14006	Base cover	HD14025	Base cover	HD14025	Base cover
27		CC41104	Hex. nut 1-3	HD12323	Plate spring A	HD12323	Plate spring A
28		FF41291	Step pin 1291	FF41291	Step pin 1291	FF41291	Step pin 1291
29		HD12254	Rubber feet	HD12318	Rubber feet	HD12318	Rubber feet
30		AA05104	Tap tight (p) 3X10	AA05902	Tap tight (p) 3X12	AA05902	Tap tight (p) 3X12
31		HD14002	Base unit	HD14017	Base unit	HD14037	Base unit
32		HD14012	Name plate	HD14028	Name plate	HD14040	Name plate
33		HD14045	Caution label	HD14045	Caution label	HD14045	Caution label