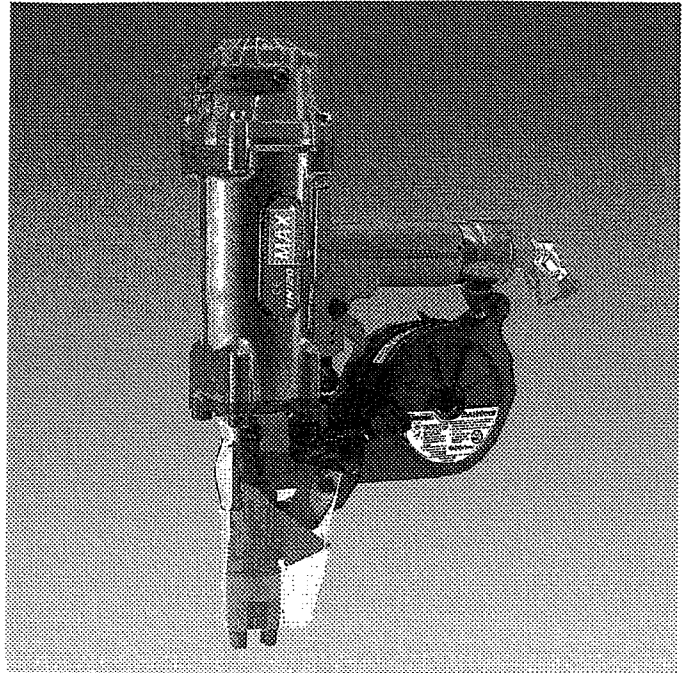


MAX[®]

HN120

HIGH PRESSURE CONCRETE TOOL



OPERATING and MAINTENANCE MANUAL

▲ WARNING:

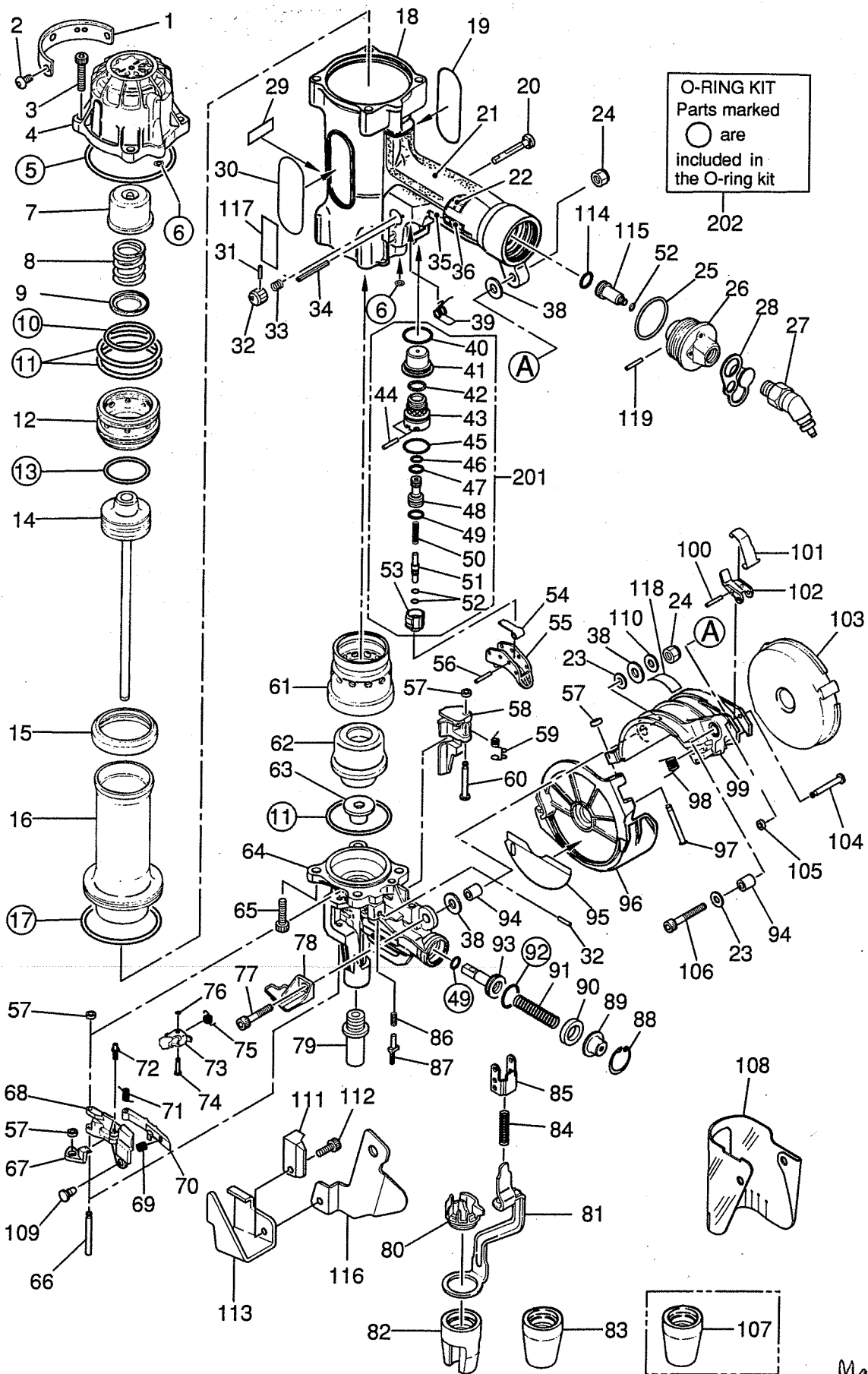
BEFORE USING THIS TOOL, STUDY THIS MANUAL TO ENSURE SAFETY WARNING AND INSTRUCTIONS.

KEEP THESE INSTRUCTIONS WITH THE TOOL FOR FUTURE REFERENCE.

May 2007

HN120

EXPLODED
NEW AND SPARE
PARTS LIST



May '07

HN120

ITEM No.	PART NO.	DEXRIPTION
1	HN10325	EXHAUST COVER
2	BB41701	SCREW 6X8
3	BB40227	SCREW 6X35
4	HN70095	CYLINDER CAP UNIT
5	HH14040	O-RING AS568-040
6	HH11120	O-RING ARP568-009
7	HN10275	PISTON STOP
8	KK23516	COMPRESSION SPRING 3516
9	CN31892	HEAD VALVE WASHER
10	HH19708	O-RING 1A2.6X39.5
11	HH11157	O-RING AS568-136
12	HN10274	HEAD VALVE PISTON
13	HH11803	O-RING P36
14	HN10279	MAIN PISTON UNIT
15	HN10278	CYLINDER SEAL
16	HN10276	CYLINDER A
17	HH12108	O-RING 1AG60
18	HN10271	FRAME
19	HN10755	CAUTION LABEL
20	CN34088	TRIGGER LOCK LEVER
21	HN10310	GRIP COVER A
22	HN10322	BUFFER SEAT A
23	EE31105	PLANE WASHER 1-6
24	CC00402	NUT M6
25	HH12118	O-RING 1AG35
26	HN10313	END CAP
27	TT05425	AIR PLUG H-FPM
28	HN10316	END PLUG CAP
29	CN34309	COUPLING CAUTION SEAL
30	HN10756	NAME LABEL (USA)
31	FF21201	ROLL PIN 2.5X10
32	HN10327	TRIGGER LOCK DIAL
33	KK23507	COMPRESSION SPRING 3507
34	FF21235	ROLL PIN 3X30
35	HN10311	GRIP COVER B
36	HN10323	BUFFER SEAT B
38	HH21002	SEAL 002 NBR
39	KK33189	TORSION SPRING 3189
40	HH11159	O-RING ARP568-016
41	HN10326	TRIGGER VALVE CAGE
42	HH11151	O-RING ARP568-013
43	HN10283	TRIGGER VALVE HOUSING
44	FF30161	PARALLEL PIN 161
45	HH11138	O-RING 1AP20
46	HH11119	O-RING 1AP6
47	HH11802	O-RING P7
48	CN33627	PILOT VALVE
49	HH11113	O-RING 1AP9
50	KK23129	COMPRESSION SPRING 3129
51	HN10328	TRIGGER VALVE STEM
52	HH11901	O-RING 1B1.4X2.5
53	HN10284	TRIGGER VALVE CAP
54	HN10286	CONTACT LEVER

HN120

ITEM No.	PART NO.	DEXRIPTION
55	HN81029	TRIGGER UNIT
56	FF22402	ROLL PIN 3X16
57	EE39602	RUBBER WASHER 7
58	HN10300	FEED PAWL
59	KK33190	TORSION SPRING 3190
60	FF41598	STEP PIN 1598
61	HN10277	CYLINDER B
62	HN10282	BUMPER
63	HN10296	DRIVER GUIDE
64	HN10294	NOSE UNIT
65	BB40444	SCREW 8X30
66	FF31261	PARALLEL PIN 1261
67	HN10302	DOOR OPENING/CLOSING PLATE
68	HN10301	DOOR
69	KK23376	COMPRESSION SPRING 3376
70	CT10191	SWITCHING BAR
71	KK33090	TORSION SPRING 3090
72	FF42214	STEP PIN 2214
73	HN10303	DOOR OPENING/CLOSING LEVER
74	FF41528	STEP PIN 1528
75	KK33197	TORSION SPRING 3197
76	CT10226	LEVER RETAINING RUBBER
77	BB40457	SCREW 6X38
78	HN10309	NAIL GUIDE
79	HN10297	NOSE TIP
80	HN10213	FEED FINGER RETAINER
81	HN10289	CONTACT ARM UNIT
82	HN10292	ATTACHMENT A
83	HN10293	ATTACHMENT B
84	KK23256	COMPRESSION SPRING 3256
85	HN10287	ARM GUIDE UNIT
86	KK24072	COMPRESSION SPRING 4072
87	HN10304	DOOR OPENING/CLOSING FINGER
88	JJ22408	C-RETAINING RING 24
89	HN10299	SPRING COLLAR
90	CN31755	FEED PISTON STOP
91	KK23517	COMPRESSION SPRING 3517
92	HH11106	O-RING 1AP16
93	HN10298	FEED PISTON
94	FF51613	HOLLOW PIN
95	HN10754	CAUTION LABEL
96	HN10307	MAGAZINE CAP
97	FF41281	STEP PIN 1281
98	KK33218	TORSION SPRING 3218
99	HN10306	MAGAZINE HOLDER
100	FF21101	ROLL PIN 3X12
101	HN10308	MAGAZINE HOOK
102	HN10737	MAGAZINE LOCK LEVER
103	HN10736	MAGAZINE
104	FF41599	STEP PIN 1599
105	EE39609	RUBBER WASHER 1.8X6X2
106	BB71504	SCREW 6X35
107	HN10330	ATTACHMENT C UNIT

HN120

ITEM No.	PART NO.	DEXRIPTION
108	HN10211	DUST COVER
109	CN31083	DUST COVER FITTING
110	CN30707	COLLAR
111	HN10501	GUIDE HOLDER
112	BB40436	SCREW 6X14
113	HN10502	NAIL NOSE GUIDE
114	HH11132	O-RING 1AP10A
115	HN10752	END CAP STEM
116	HN10753	NAIL NOSE GUIDE B
117	HN10757	TRIGGER LOCK SEAL
118	HN10758	CAUTION LABEL B
119	FF21229	ROLL PIN 3X20
201	HN81032	TRIGGER VALVE KIT
202	HN81033	O-RING KIT