



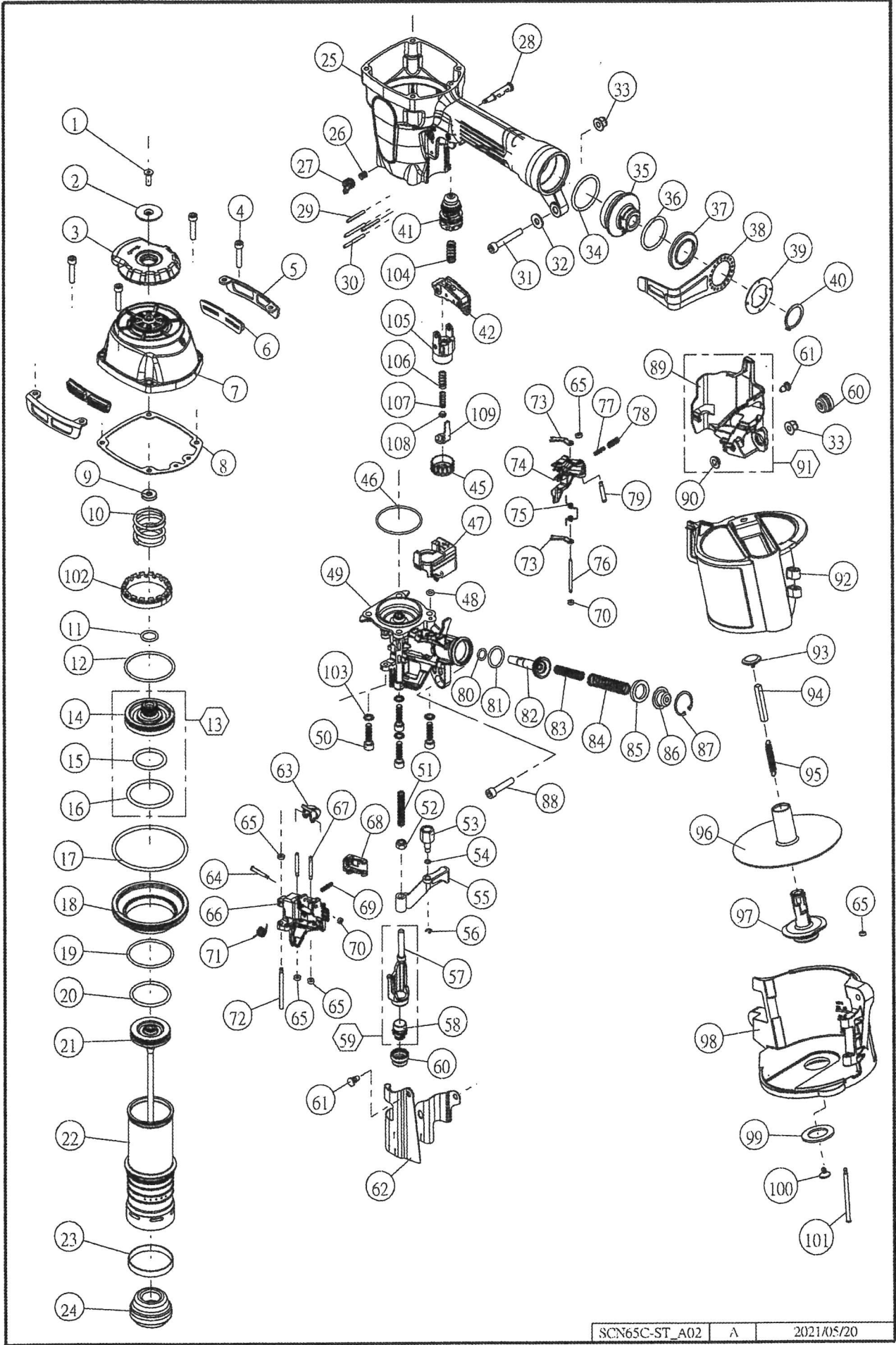
# SCN65C-ST

## Pneumatic Coil Nailer



### Schematic & Spare Parts List

Dimensions	297mm x 127mm x 272mmm
Weight	2.3kgs
Operating Pressure	70—120 psi (5-8 bar)
Loading Capacity	200-400
Air Consumption	0.66 litre/cycle



SCN65C-ST		NOTE: When ordering spare parts, please state the part name and part number.									
Item	Part NO.	Description	Qty	Item	Part NO.	Description	Qty	Item	Part NO.	Description	Qty
1	104771	Screw M5 X 16	1	51	101543	Spring	1	101	100079	Step Pin	1
2	104770	Bushing	1	52	101018	Nut M6	1	102	103092	PU SPACER	1
3	104075	Exhaust Cover	1	*53	101554	Contact bolt	1	103	101855	Washer	4
4	100933	Screw M5 X 25	4	54	101555	O-Ring	1	104	103222	Spring	1
5	101498	Protector	2	55	101557	Contact Arm	1	105	103219	Arm Guide	1
6	100927	Rubber Protector	2	56	101482	E-Ring	1	106	101530	Spring	1
7	105292	Cylinder Cap Unit	1	57	101558	Front Contact Arm	1	107	101529	Spring	1
8	101505	Seal, Cylinder Cap	1	58	101575	Contact Arm Bushing	1	108	101527	Position Block	1
9	101500	Seal Plate	1	59	101559	Front Contact Arm Unit		109	103221	Contact Arm A	1
10	101499	Spring	1	60	101568	No-mar pad	2	MOQ for items in the following categories is 10pcs, order quantities under 10pcs for these items will be			
11	100535	O-Ring	1	*61	100080	Hook, Dust Cover	2				
12	101502	O-Ring	1	62	101567	Dust Cover	1				
13	101647	Head Valve Piston Unit		*63	100349	Door Latch	1	1. Orings – not included in the oring kit			
14	101501	Head Valve Piston	1	*64	100347	Step Pin	1	2. Screws, bolts			
15	101504	O-Ring	1	*65	100078	Rubber Washer	5	3. Pins - roll pin, solid pins			
16	101503	O-Ring	1	*66	101560	Door	1	4. Standard washers – not special washer			
17	103129	O-Ring	1	*67	101553	Step Pin	2	5. Nuts			
18	103127	Cylinder Ring	1	*68	101551	Check Pawl	1				
19	103128	O-Ring	1	*69	101552	Spring	1				
20	101576	O-Ring	1	*70	103276	Rubber Washer	2				
21	101506	Main Piston Unit		*71	100350	Spring, Door Latch	1				
21.1	101507	Main Piston	1	*72	101537	Step Pin	1				
21.2	101508	Driver	1	*73	101539	Check Pawl	2				
22	101511	Cylinder	1	*74	101541	Feed Pawl	1				
23	101513	Check Valve	1	*75	101540	Spring	1				
24	101514	Bumper	1	*76	101538	Step Pin	1				
25	101723	Frame	1	*77	100336	Spring	1				
26	101520	Spring	1	*78	100337	Spring	1				
27	101519	Trigger lock dial	1	*79	101544	Step Pin	1				
28	101521	Trigger lock lever	1	*80	100872	O-Ring	1				
29	100174	Roll Pin	2	*81	100642	O-Ring	1				
30	100966	Roll Pin	2	*82	101545	Feed Piston	1				
31	100045	Screw M6 X 40	1	*83	101547	Spring	1				
32	100046	Washer	1	*84	101546	Spring	1				
33	100117	Nut, Elastic Stop M6	2	*85	101548	Feed Piston Stop	1				
34	100040	O-Ring	1	*86	101549	Spring Collar	1				
35	101561	End Cap	1	*87	101550	C-Ring	1				
36	101569	O-Ring	1	88	100127	Screw M6 X 30	1				
37	101573	Spacer	1	89	101562	Contact Arm Cover	1				
38	101570	Hook	1	90	100683	Bushing	1				
39	101571	Washer	1	91	101651	Contact Arm Cover Unit					
40	101572	C-Ring	1	92	100480	Magazine Cover	1				
41	103223	Trigger Valve Unit	1	93	101565	Receiver, Spring	1				
*42	103243	Trigger Assembly	1	94	100110	Spacer	1				
*45	101531	Adjust dial	1	95	100111	Spring	1				
46	101512	O-Ring	1	96	101564	Nail Support	1				
47	101532	Adjust Spacer	1	97	101580	Magazine Post	1				
48	100484	O-Ring	1	98	101581	Magazine	1				
49	101535	Nose	1	99	100221	Rubber Washer	1				
50	100077	Screw M6 X 22	4	100	100113	Receiver, Spring	1				