



RE·BAR·TIER™

RB398S

Re-Bar Tying Tool



OPERATING & MAINTENANCE MANUAL



WARNING

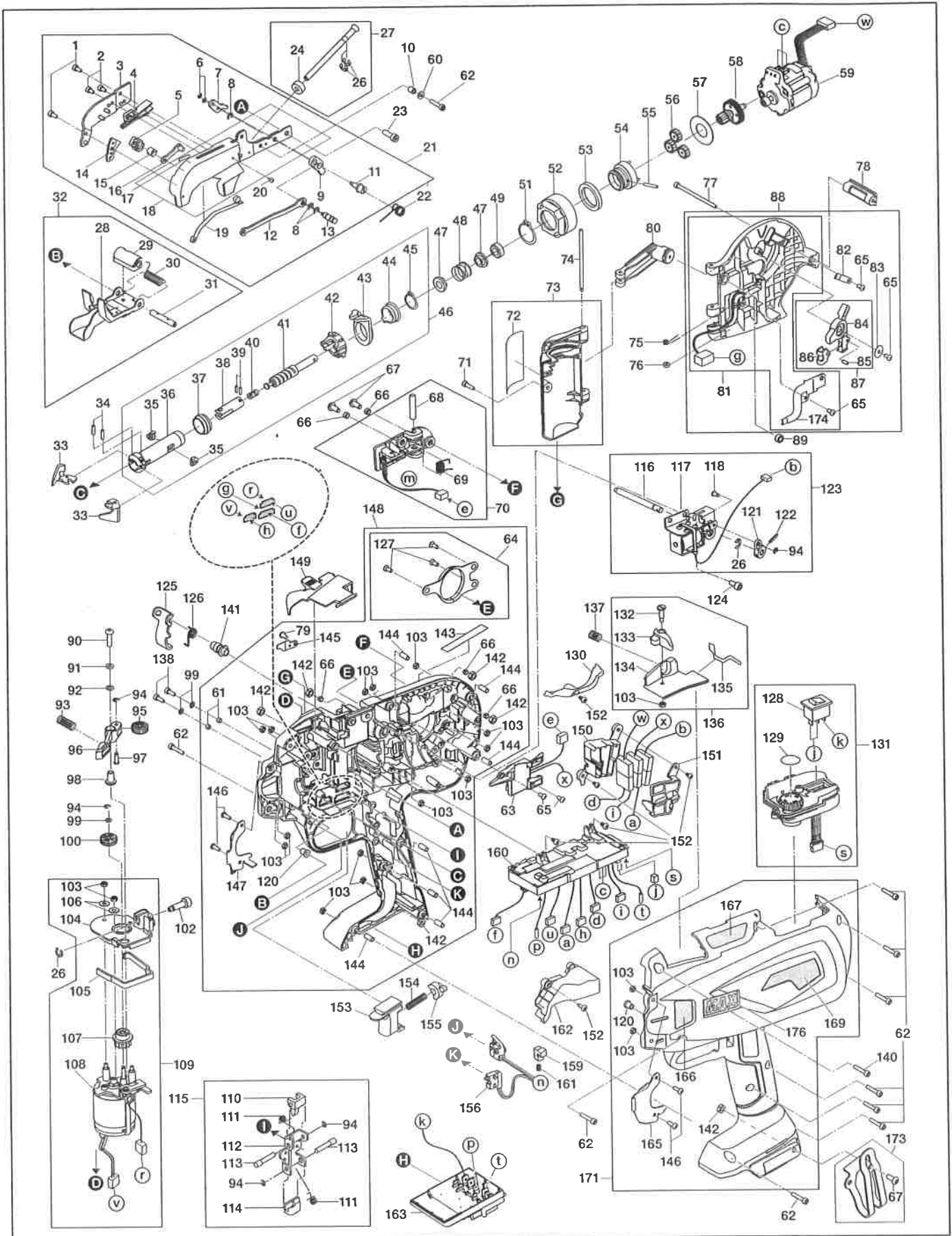
BEFORE USING THIS TOOL, STUDY THIS MANUAL TO ENSURE SAFETY WARNING AND INSTRUCTIONS.

KEEP THESE INSTRUCTIONS WITH THE TOOL FOR FUTURE REFERENCE.

NOV 2019

RB398S(CE)

EXPLODED
VIEW AND SPARE
PARTS LIST



RB398S

ITEM	PART NO	DESCRIPTION	ITEM	PART NO	DESCRIPTION
1	BB40112	BOLT 3X6	89	RB12772	PLATE B
2	BB86701	TORX BOLT 3X5	90	BB41707	BOLT 4X16
3	RB70404	ARM B UNIT (397)	91	EE11103	SPRING WASHER 2-4
4	RB11999	WIRE GUIDE B (397)	92	EE39825	WASHER 4.5X7.4X0.8
5	RB12000	CUTTER	93	KK24175	COMP. SPRING 4175
6	JJ10109	E-RING 2	94	JJ10113	E-RING 2.5
7	RB12090	CUTTER LEVEL B (397)	95	RB10359	FEEDING GEAR B2
8	JJ10514	E-RING 3 CF	96	RB10362	RELEASE LEVER
9	RB12005	CUTTER LEVEL A (397)	97	FF41809	STEP PIN 1809
10	FF51647	HOLLOW PIN 1647	98	RB12852	HOLLOW PIN
11	RB12710	SHAFT	99	EE32104	WASHER 2-3
12	RB12004	CONNECTING ROD (397)	100	RB10357	FEEDING GEAR B1
13	RB12780	PIN	102	RB12766	WIRE GUIDE C
14	RB11998	WIRE GUIDE A (397)	103	CC41104	HEX NUT 1-3
15	RB12121	FIXED CUTTER (N)	104	RB12761	PARTITION PLATE
16	RB70493	CUTTER PLATE UNIT	105	RB12765	PARTITION SPONGE
17	RB12781	PLATE	106	EE31133	WASHER
18	RB81304	ARM A UNIT	107	RB70509	FEEDING GEAR A ASSY
19	RB11997	LEAF SPRING (397)	108	RB70729	FEEDING MOTOR ASSY
20	AA25113	PAN-HEAD SCREW 2X4	109	RB81312	FEEDING ASSY
21	RB70741	ARM ASSY (398S)	110	RB10368	JAW A
22	KK33413	SPRING 3413	111	KK33249	TORSION SPRING 3249
23	BB40839	SCREW 4X16	112	RB10370	JAW BASE
24	RB12007	PIPE SPONGE	113	FF41822	STEP PIN 1822
26	JJ10101	E-RING 4	114	RB10369	JAW B
27	RB81136	PIPE ASSY	115	RB70495	JAW BASE ASSY
28	RB70565	CURL GUIDE UNIT (399A)	116	RB12769	ROTARY PIN
29	RB12010	CURL GUIDE COVER	117	RB81308	SOLENOID ASSY
30	KK33365	TORSION SPRING	118	FF41876	PIN 1876
31	RB11708	STOPPER SHAFT	120	FF52119	HOLLOW PIN 2119
32	RB70567	CURL GUIDE ASSY (399A)	121	RB12029	ROTARY PLATE
33	RB11816	HOOK	122	FF21620	PIN 2X12
34	RB81113	WS PIN 2.5X10	123	RB81306	BRAKE ASSY
35	RB12014	KEY	124	BB40712	BOLT 4X8
36	RB12017	SLEEVE A	125	RB12770	REEL PRESS
37	RB12279	SLEEVE GUIDE	126	KK33373	SPRING 3373
38	RB70675	TIP AXIS B	127	AA22522	SCREW 3X8
39	FF31599	PARALLEL PIN 1599	128	ZS00034	MAIN SWITCH UNIT
40	KK23730	COMPRESSION SPRING 3730	129	RB12796	LABEL, TORQUE DIAL
41	RB12708	TIP AXIS A	130	RB12814	HARNESS COVER
42	RB12015	SLEEVE B	131	RB81309	SWITCH BASE ASSY
43	RB12789	CUTTER RING	132	RB12054	STEP PIN
44	RB12091	CUTTER RING GUIDE	133	RB12053	RELEASE STOPPER
45	JJ21011	C-RING 14	134	RB12055	STOPPER BASE
46	RB81314	TIP AXIS ASSY	135	RB12056	SPONGE F
47	RB12020	SPRING COLLAR	136	RB81139	STOPPER BASE ASSY
48	KK29026	COMPRESSION SPRING 9026	137	KK29133	COMPRESSION SPRING 9133
49	RB12019	BUMPER	138	BB40710	BOLT 3X8
51	JJ21603	C-RING 20	140	BB40709	BOLT 3X16
52	RB10338	INTERNAL GEAR	141	RB12771	PLATE A
53	RB12783	RING	142	CC42512	HEX, NUT 1A M4 CF
54	RB70745	PLANET CAGE UNIT	143	RB12521	WARNING LABEL (398)
55	FF31589	PIN 1589	144	FF51714	HOLLOW PIN 1714
56	RB10341	PLANET GEAR	145	RB12745	REEL PROTECTOR
57	RB10484	GEAR PRESS WHEEL	146	BB41503	BOLT 3X8
58	RB70736	SUN GEAR UNIT	147	RB11979	COVER L (397)
59	RB70734	TWISTING MOTOR	148	RB70708	FRAME L ASSY (398S)
60	EE31131	WASHER 1-3	149	RB11987	WINDOW
61	FF51817	HOLLOW PIN 1817	150	RB12826	CONNECTOR BASE
62	BB40810	BOLT 3X16	151	RB12827	CONNECTOR COVER
63	RB70710	SENSOR CIRCUIT BOARD F UNIT	152	AA05572	SCREW 3X8
64	RB81347	REEL GUIDE ASSY	153	RB12080	TRIGGER
65	AA09501	SCREW 3X6 CF	154	KK23656	COMPRESSION SPRING 3656
66	FF51710	HOLLOW PIN 1710	155	RB12101	TRIGGER LOCK LEVER
67	BB41706	BOLT 4X10 CF	156	RB81349	SWITCH HARNESS UNIT
68	FF31563	PIN 1563	159	RB12744	SWITCH BLOCK
69	KK34089	SPRING 4089	160	RB81341	MAIN CIRCUIT BOARD UNIT
70	RB70719	RATCHET COVER ASSY	161	KK23604	COMPRESSION SPRING 3604
71	BB40720	BOLT 3X12	162	RB12813	FRONT HARNESS COVER
72	RB12791	SPECIFICATION LABEL	163	RB70697	ELECTRODE UNIT
73	RB70705	MOTOR COVER ASSY (398S)	165	RB11981	COVER R (397)
74	FF41871	STEP PIN 1871	166	RB12689	WARNING LABEL
75	KK34067	TORSION SPRING 4067	167	RB11985	USAGE LABEL
76	EE39609	PLAIN RUBBER WASHER 1.8X6X2	169	RB12742	398S LABEL
77	BB40714	BOLT 3X50	171	RB70706	FRAME R ASSY (398S)
78	RB12031	JOINT	173	RB81184	BELT HOOK ASSY
79	AA21419	SCREW 3X8 CF	174	RB12752	LED COVER
80	RB81305	REEL HOLDER ASSY	176	RB12661	BRAND PLATE
81	RB70715	REEL MAGAZINE			
82	RB12038	REEL STOPPER SPRING			
83	EE39184	WASHER 3.1X11.8X1			
84	RB12035	REEL STOPPER			
85	FF21240	PIN 2.5X6			
86	RB12036	STOPPER PLATE			
87	RB70427	REEL STOPPER ASSY			
88	RB70770	REEL MAGAZINE ASSY			