



NEW!

PS50-10B-CL Anvil Pneumatic Stapling Plier



Features:

- Curved blade for easy access.
- Magazine holds 2 sticks of staples.
- Quick release magazine to clear any jams.
- Easy to hang or mount on a stand.

Designed for carton assembly and closure, this time saving tool is fast and easy to use.

Powerful, heavy-duty pneumatic stapling pliers for fastening corrugated cartons, eg pallet cartons, carton inserts and other corrugated material requiring a plier type stapler.

Long magazine has large staple capacity which reduces reloading down time.

AN OUTSTANDING TOOL FOR:

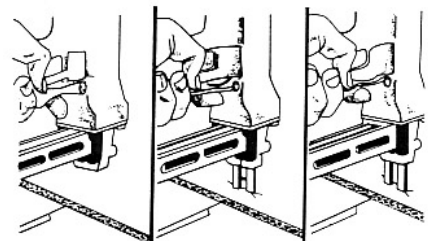
- Stapling corrugated cardboard
- Produce cartons
- Fish cartons
- Spare parts cartons
- Pallet cartons

Specifications:

Length:	365mm
Height:	245mm
Width:	90mm
Weight:	2.36kg
Max pressure:	55psi
Staple capacity:	104 staples per load

Especially designed for securing varying thicknesses of corrugated packing material. Fits staple leg lengths from 10mm to 16mm depending on work requirements. Has a deep 152mm throat and a curved clincher arm to enable seam stapling in new carton assembly.

The powerful direct action of the PS50 shuttle compresses corrugated cardboard while each staple is being driven with minimal damage to the liner.



PS50-10B-CL uses the following staples:

Staple Code	Box Qty	Length
SB103020-10MM	2,500	10mm
SB103020-12MM	2,500	12mm
SB103020-16MM	2,500	16mm

SIFCO
fastening solutions

AUCKLAND
34 Lansford Cres
Avondale
Ph 09 828 2019

TAURANGA
3/94 Newton Rd
Mt Maunganui
07 575 0088

CHRISTCHURCH
3 Industry Ave
Waterloo Park
03 358 8135

Email: sales@sifco.co.nz

www.sifco.co.nz

SC611