



## **OPERATION and MAINTENANCE MANUAL**

### **MODEL: TSPC13 AIR SCREWDRIVER**



October 2012

---

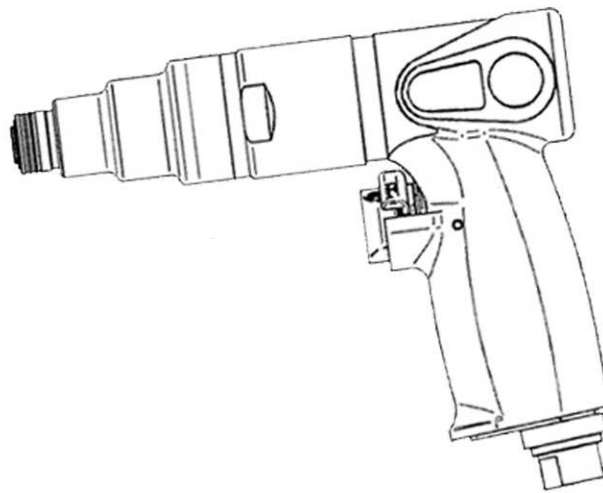
#### **⚠ WARNING:**

Before operating this tool, all operators should study manual to understand and follow the safety warnings and instructions. Keep these instructions with the tool for future reference. If you have questions, contact your distributor.

## TOOL SPECIFICATIONS

Model No. TSPC13 Air Screwdriver

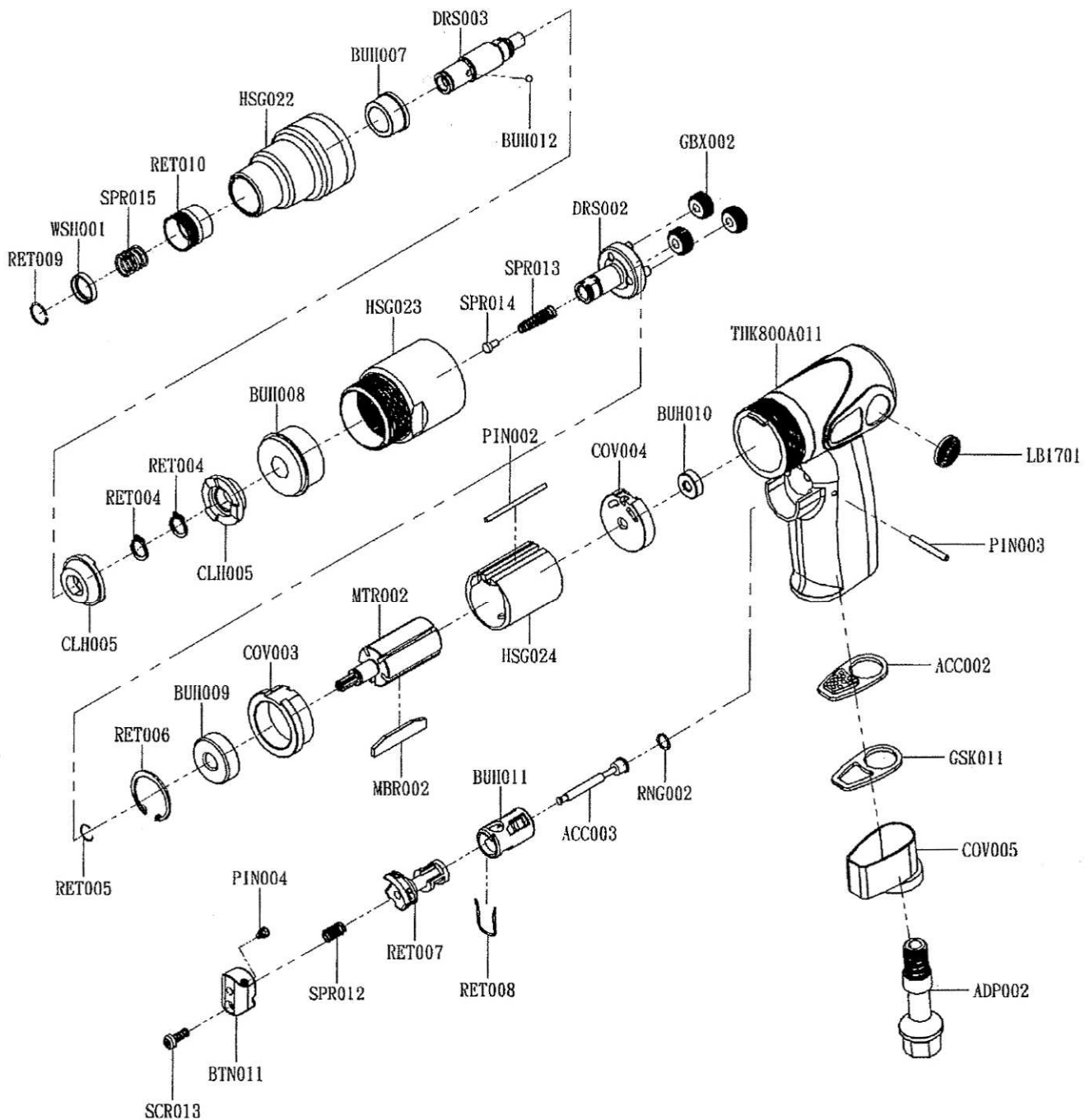
Free Speed	Hex. Shank Dia.	Max. Torque	Air Consumption	Air Pressure	Sound Level	Tool Length	Tool Weight
1300 rpm	6.35 mm (1/4")	35 Nm (310 lb-in)	326 l/min @ 6.2 bar (11.5 cfm @ 90 psi)	6.2 bar (90 psi)	91 dB(A)	185 mm (7-1/4")	1.2 kg (2.6 lbs)



### **WARNING**

- Wearing eye and ear protections and side shields can reduce dangers.
- Use correct coil hose and confirm if well-connected.
- Keep your body in balanced position while operating.
- Do not wear loose clothing while working in case getting caught in the tool.
- When the air hose is broken or loosened, the hose could move uncontrolled resulting in the malfunction of the tool.
- The tool or accessories, such as bits and sockets, may wear out after some time of being used. If continue to be used, the wearing out may result in broken parts.
- When the tool is too seriously damaged to be used anymore, do recycling the parts, instead of disposing of the tool carelessly as waste. The tool, accessories and packing materials should be sorted for environment-friendly recycle.

# TSPC13



Part NO.	Description	Q' ty
SPR012	TRIGGER SPRING	1
BTN011	TRIGGER	1
SCR013	RETAINING SCREW	1
ACC002	DIFFUSER	1
PIN004	TRIGGER SPRING	1
RET007	RETAINING VALVE	1
BUH011	VALVE BUSHING	1
RET008	SPRING CLIP	1
RNG002	WASHER	1
ACC003	VALVE	1
GSK011	GASKET	1
WSH001	WASHER	1
RET009	RETAINING RING	1
SPR015	CHUCK SPRING	1

Part NO.	Description	Q' ty
LB1701	RUBBER LABEL	2
RET010	BALL RETAINER	1
ADP002	HOUSE ADAPTER	1
COV005	MUFFLER COVER	1
BUH012	STEEL BALL	1
BUH007	SLEEVE BEARING	1
HSG022	CLUTCH HOUSING	1
RET004	RETAINING RING	2
HSG024	CYLINDER	1
PIN002	PIN	1
GBX002	PLANET GEAR	3
MTR002	ROTOR	1
COV004	REAR PLATE	1
THK800A011	HANDLE	1

Part NO.	Description	Q' ty
CLH005	CLUTCH	2
BUH010	BALL BEARING	1
DRS002	WORK SPINDLE	1
MBR002	ROTOR BLADE	5
BUH008	BALL BEARING	1
HSG023	GEAR HOUSING	1
SPR014	SPRING GUIDE	1
PIN003	TRIGGER PIN	1
SPR013	SPRING	1
DRS003	WORK SPINDLE	1
COV003	FRONT PLATE	1
BUH009	BALL BEARING	1
RET005	RETAINING RING	1
RET006	RETAINING RING	1