

MAX

ENGINEERED FOR
PERFORMANCE



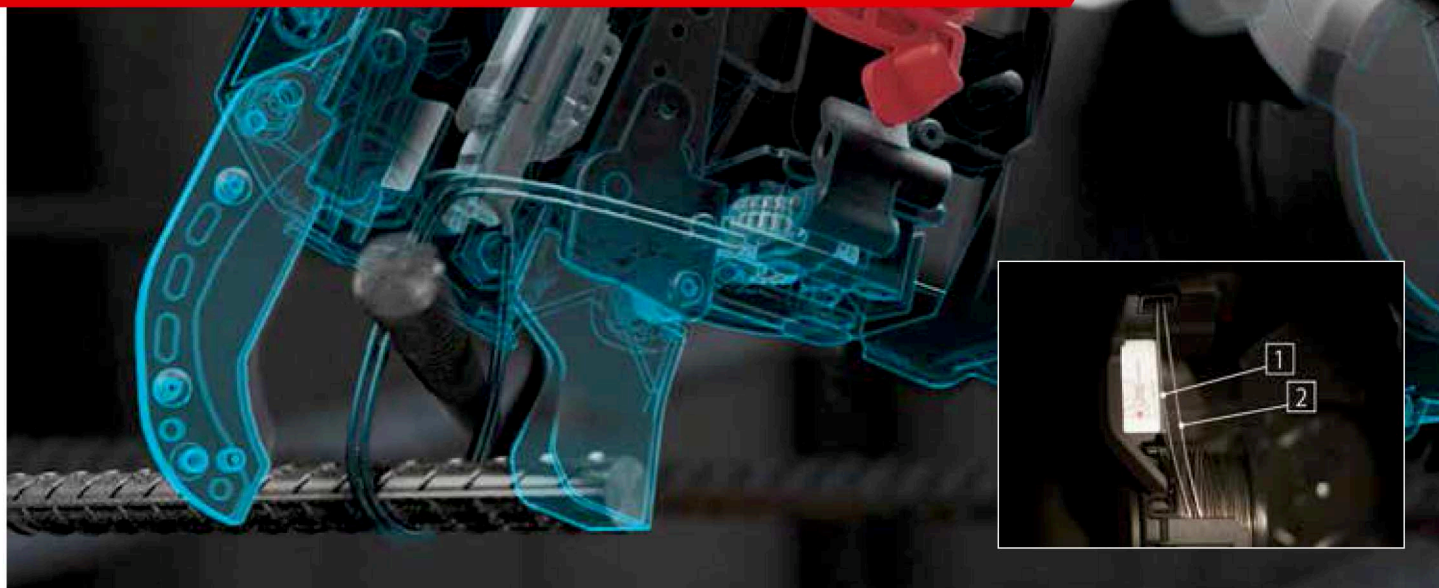
NEW RB443T

RE·BAR·TIER
TWINTIER

July 2025

OS956NZ

Original since 1993, made in Japan

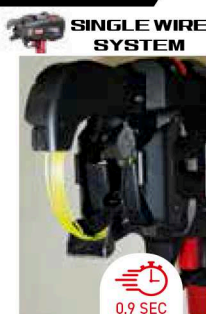
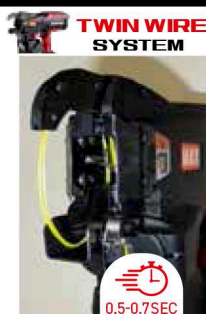


KEY FEATURES

FASTER TIE SPEED

TWINTIER

Incorporates MAX Twin-Wire System which wraps two wires simultaneously, making a single tie in 0.5 to 0.7 seconds. Single-Wire System wraps one wire three times, making each tie at 0.9 seconds.



+100% MORE TIE CAPACITY - COIL



Approx. 240 ties

TW1061 Wire



Approx. 120 ties

TW898 Wire



TWINTIER can make approx. 240 ties per one coil of wire. REBARTIER can make approx. 120 ties per one coil of wire.

+1000 TIES MORE CAPACITY - CHARGE

D13 x D13 Rebar combination



Approx. 5.000 ties

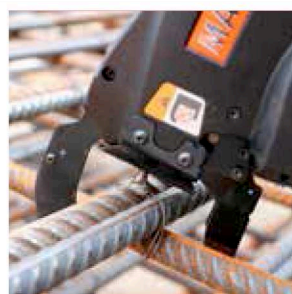


Approx. 4.000 ties



Both TWINTIER and REBARTIER use the same battery, but TWINTIER can tie 5000 times on a full charge, while REBARTIER can tie 4000 times (1000 less ties).

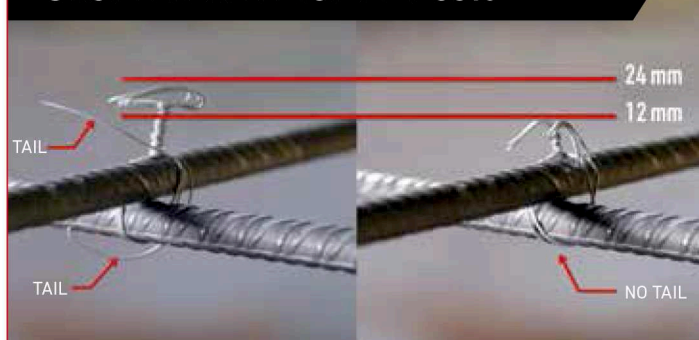
+50% TIGHTNESS



Tying Strength (N)



SHORTER TIE HEIGHT BY 50%



NUMBER OF TIE/COIL

	RB398S	RB443T	RB611T	RB401T-E
D10+D10	120	265	-	260
D13+D13	120	240	-	235
D16+D16	120	215	205	210
D20+D20	-	180	180	175
D22+D22	-	170	170	-
D25+D25	-	-	155	-
D38+D16	-	-	150	-
D38+D16+D16	-	-	140	-

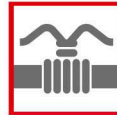
RB443T - FASTER TYING MODEL -



FEATURES



Wire Feeding Support



0.5sec/tie



Easy Wire Loading Button



Short Trigger Stroke



Torque Dial



Maximum 265 ties/coil



Durable



Equipped Belt Hook

KEY FEATURE. 1

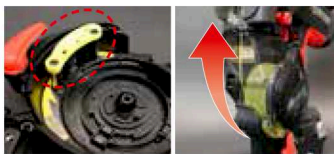
Faster Tying Speed



0.5 sec/tie

MECHANISM

Improved tying operation and increased wire feed speed with new "WIRE FEED SUPPORT" part, which allows even faster tying than the previous RB441T.



KEY FEATURE. 2

Two Ways Loading Wire



1. WIRE LOADING ASSISTANCE



2. MANUAL WIRE LOADING

The WIRE LOADING ASSISTANCE feature added to the RB443T makes wire replacement easier. You can also still use the same manual replacement method as the previous RB441T.

APPLICABLE REBAR COMBINATION

Mesh Rebar



MINIMUM
Φ2.6×Φ2.6

MAXIIMUM
Φ8×Φ8

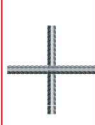
4 Bars



MINIMUM
D10×D10×
D10×D10

MAXIMUM
D16×D16×
D13×D13

2 Bars



MINIMUM
D10×D10

MAXIIMUM
D22×D22



Extension Bar Optional



Lift-up Nose Optional

SPECIFICATIONS

MODEL:	RB443T
WEIGHT:	2.5 Kg Battery included
DIMENSIONS:	H295 × W120 × L330 mm
TYING SPEED:	0.5 sec/tie
WRAPS PER TIE:	2 wraps
TIES PER COIL:	Approx. 170 to 265 ties
TIES PER CHARGE:	Approx. 5,000 ties
BATTERY:	JPL91450A 5.0 Ah Li-ion 14.4 V
CHARGER:	JC925A
BATTERY RECHARGE TIME:	80% capacity - 60min 100% capacity - 80min
APPLICABLE REBAR COMBINATION:	Mesh rebars: Φ2.6×Φ2.6 - Φ8×Φ8 2 rebars: D10×D10 - D22×D22

TW1061T SERIES TWIN WIRE



Tiewire for TVINTIER

Patented. EP3326949 / EP3632828 / EP3666702 / RU2675942



30 coils /box



TW1061T
Regular Steel



TW1061-EG
Electro Galvanize



TW1061-S
Stainless Steel

STANDARD EQUIPMENT FOR ^{RE-BAR-TIER} TVINTIER



JC925A
Charger



JPL91450A
14.4V 5.0Ah Li-ion Battery
X 2 PACKS

SIFCO
fastening solutions

AUCKLAND
34 Lansford Cres
Avondale
Ph 09 828 2019

Email: sales@sifco.co.nz

TAURANGA
3/94 Newton St
Mt Maunganui
07 575 0088

CHRISTCHURCH
3 Industry Ave
Waterloo Park
03 358 8135

www.sifco.co.nz

OS956NZ